

PLAN OF SURVEY

OF ALL OF LOTS 42 AND 43, in BLOCK K

REGISTERED PLAN No. 243, TOWN OF DESERONTO

COUNTY OF HASTING

SCALE = 1 : 300 - 2011 - MacDONALD & EBERHARDT SURVEYING LTD.



I require this Plan to be deposited under The Land Titles Act.

June 27, 2011

Thomas MacDonald
Thomas MacDonald, O.L.S.

PLAN 21R- 23534

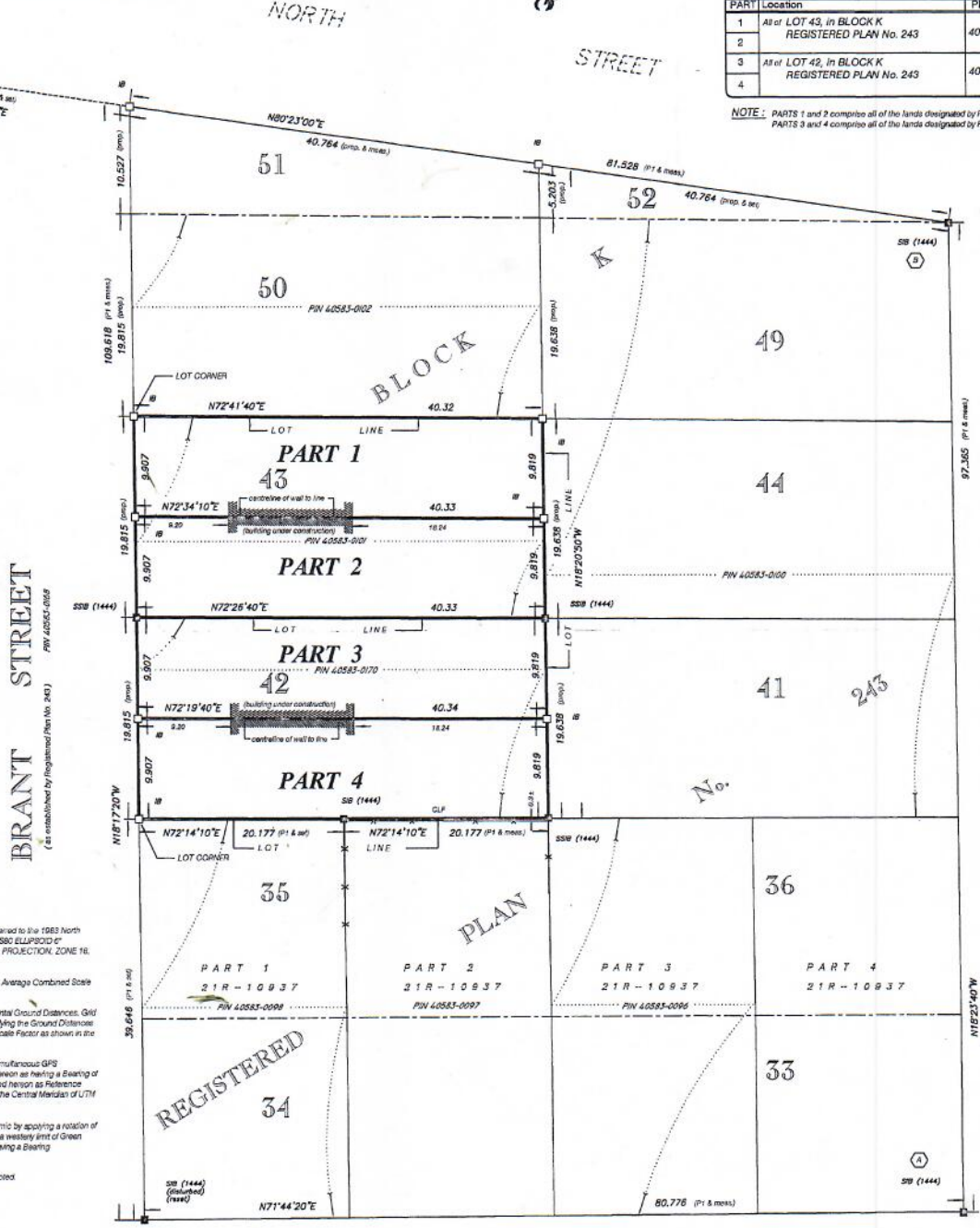
Received and deposited
July 8, 2011

S. Griffiths
DEP. Land Registrar
for the Land Titles Division of
HASTINGS (No. 21)

METRIC Distances and Coordinates shown on this Plan are in metres and can be converted to feet by dividing by 0.3048.

SCHEDULE		
PART	Location	Area
1	All of LOT 43, in BLOCK K REGISTERED PLAN No. 243	398 m ²
2		398 m ²
3	All of LOT 42, in BLOCK K REGISTERED PLAN No. 243	398 m ²
4		398 m ²

NOTE: PARTS 1 and 2 comprise all of the lands designated by PIN 40583-0101. PARTS 3 and 4 comprise all of the lands designated by PIN 40583-0170.



NOTE

Grid Coordinates shown hereon are referred to the 1983 North American Datum - NAD83 (CGRS), GRS80 ELLIPSOID & UNIVERSAL TRANSVERSE MERCATOR PROJECTION, ZONE 18, CENTRAL MERIDIAN 81° WEST.

Grid Coordinates are derived using the Average Combined Scale Factor as Fitted in the ORP Schedule.

All distances shown hereon are Horizontal Ground Distances. Grid Distances can be calculated by multiplying the Ground Distances shown on the Plan by the Combined Scale Factor as shown in the ORP Schedule.

Bearings are UTM Grid derived from simultaneous GPS observations on Points A & B shown hereon as having a Bearing of N 19°34'00" W, and B & C shown hereon as having a Bearing of N 72°14'10" E. All bearings are referred to the Central Meridian of UTM Zone 18 (87° West Longitude).

Bearings may be converted to astronomic by applying a rotation of 1°29'00" counter clockwise to refer to a westerly limit of Green Street shown on Plan 21R-10937 as having a Bearing of N 72°14'10" E.

Fences are to 'line' unless otherwise noted.

- LEGEND**
- denotes Survey Monument Planted
 - Survey Monument Found
 - Iron Bar (10 mm x 600 mm)
 - SSB Standard Iron Bar (25 mm x 1200 mm)
 - SSSB Short Standard Iron Bar (25 mm x 600 mm)
 - RB Rock Bar
 - RPL Rock Plug
 - CP Concrete Pin
 - WB Witness
 - Fence; CLF - chain link, BF - board
 - WP - post and wire, RF - rail, SRF - astrak rail
 - W. Stuart Eason Ltd., O.L.S.
 - D. Eberhardt Surveying Ltd., O.L.S.
 - T.G. MacDonald Surveying, O.L.S.
 - Macdonald & Eberhardt Surveying Ltd., O.L.S.
 - Peter J. Stringer, O.L.S.
 - Plan 21R-10937
 - Proposition
 - CLP Crown Land Post

OBSERVED REFERENCE POINT (ORP) SCHEDULE

POINT	UTM NORTHING (M)	UTM EASTING (M)
A	4 605 636.10	335 788.18
B	4 602 928.48	335 757.44
C	4 602 913.69	335 652.29

COMBINED SCALE FACTOR - 0.999 918

OBSERVED REFERENCE POINTS (ORPs) ARE DERIVED FROM GPS OBSERVATION USING PRECISE POINT PROCESSING (PPP) SERVICE.

COORDINATES ARE TO UTM ACCURACY.

COORDINATES CANNOT, IN THEMSELVES, BE USED TO RE-ESTABLISH CORNERS OR BOUNDARIES ON THIS PLAN.

SURVEYOR'S CERTIFICATE

I CERTIFY THAT:

- This SURVEY and PLAN are correct and in accordance with the SURVEYS ACT, the SURVEYORS ACT and the LAND TITLES ACT and the REGULATIONS made under them.
- The SURVEY was completed on May 13, 2011.

June 27, 2011

Thomas MacDonald
Thomas MacDonald, Ontario Land Surveyor

MEMBER

MacDONALD & EBERHARDT SURVEYING LTD.

Field Survey : Darren Lennox
Andrew Toth
Instrument : Sokkia SET3

Reference Number: 2011-051

Plan : Tim Ewan, O.L.S.